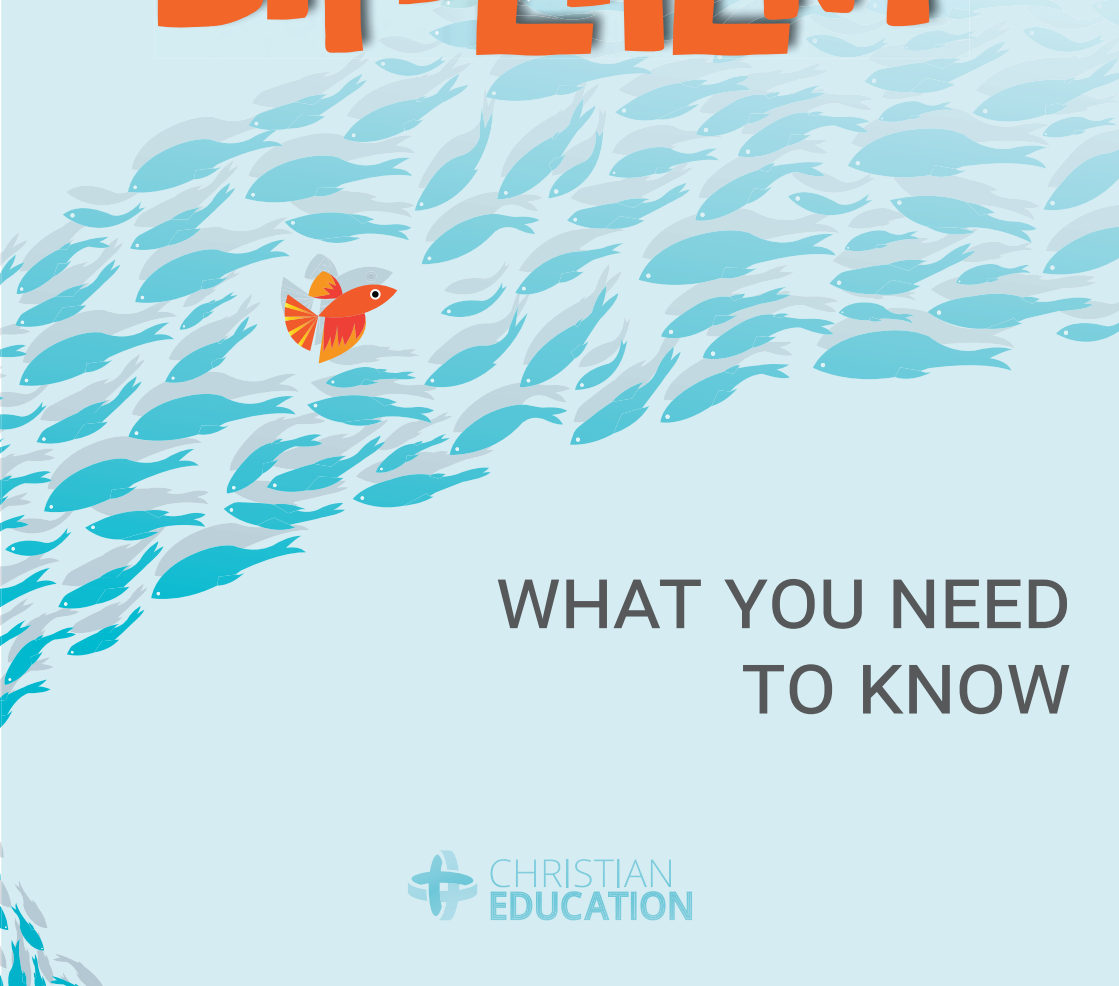


European Student Convention 2023

Dare
to be

DIFFERENT



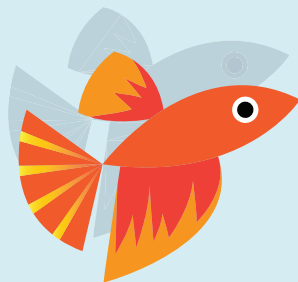
WHAT YOU NEED
TO KNOW

What You Need to Know

This booklet is your 'first stop' when preparing for ESC.

It provides an overview of the whole event and gives details on the programme, event options, registration, costs, important dates, etc.

We suggest you keep it handy and refer to it often as you work towards preparing for ESC 2023.



Contents

Introducing ESC Who, What, When, Where	Pg. 1
All About Events Events Lists and more	Pg. 5
Registration How To & Fees	Pg. 15
Additional Info Sponsors, volunteers, resources	Pg. 19
Dates to Remember Registration & submission deadlines	Pg. 23
Contact Details Get in touch	Pg. 24

SECTION 1

Introducing ESC

What is ESC?
Who can attend?
When is ESC?
Where is ESC?
What is the theme?

What is ESC?

ESC stands for the European Student Convention. It is an annual event designed specifically for students using the A.C.E. curriculum (PACEs). It is the highlight of the year for many students as it provides the opportunity for them to make lifelong **friends**, receive solid **Biblical teaching** in dynamic evening rallies, and sharpen their skills as they prepare for and compete in a **wide variety of events**.

ESC is divided into two sub-categories:

Senior Convention and **Junior Convention**

The dates, venue and basic structure are the same for both senior and junior students, but there are some differences in the programme and number/variety of activities they can take part in. See *Section 2: All About Events* for more details.

Who can attend?

Students from school or home schools that use the A.C.E. curriculum are welcome to attend ESC. Students between 9 and 12 years old participate in Junior Convention, while students between 13 and 19 participate in Senior Convention.

- **Junior** participants must have reached/be reaching their 9th birthday before the 31st July 2023 and must not have reached their 13th birthday by this same date.
- **Senior** participants must have reached/be reaching their 13th birthday before the 31st July 2023 and must not have reached their 20th birthday by this same date. (12 year olds may be given permission to participate in Senior Convention on request.)

All participants must attend the entire convention, including rallies.

All students must be accompanied by a chaperone called a **sponsor**. There are also **volunteer** opportunities at ESC. Read more on volunteers and sponsors under *Section 4: Additional Information*.

Full-time guests (parents, siblings and other non-participants), as well as **day visitors** are welcome to attend ESC as spectators and supporters. See details on costs and the booking process in *Section 3: Registration*.

When is ESC 2023?

3rd - 7th July 2023

ESC will start with registration at 4pm on Monday, 3rd July, and an opening rally at 7pm, allowing time for travel and checking in of exhibits, etc. before the convention gets started. ESC will conclude with lunch on Friday, 7th July.

A detailed programme will follow closer to the time.

Where is ESC 2023?

The convention is held at Kingham Hill School, which is beautifully situated in the heart of the Cotswolds, between Oxford, Cheltenham and Stratford-Upon-Avon. It is surrounded by delightful, rolling countryside and is easily accessible from main roads.

Address: Kingham, Chipping Norton, Oxfordshire, OX7 6TH

Travel to Kingham

By Air: The nearest airports are Bristol, Birmingham and Heathrow (all within 70 - 90 minutes from the school).

By Rail: Direct services to Kingham Station leave from London Paddington (taking 80 minutes), Oxford and Worcester. There are no taxis waiting at the station, but they can be booked. The walk or cycle from the station is 2.8 miles.

By Road: The school lies just 4 miles from Chipping Norton and is easily accessible from main roads.



Accommodation

Accommodation is boarding school style, and rooms house one to eight people. All bedding is provided, but please bring your own towels. Meals are also provided.

There is also the option to camp, bringing along your own tent or caravan. For camping, you can choose to book meals on-site or self-cater.

What is the Theme for 2023?

The theme for ESC 2023 is:

DARE TO BE DIFFERENT

And be not conformed to this world: but be ye transformed by the renewing of your mind, that ye may prove what is that good, and acceptable, and perfect, will of God. (Romans 12:2)

Students may want to consider the theme when choosing selections or forming topics for their entries; however, this is not mandatory and no additional marks will be applied for this.

Dare
to be

DIFFERENT



SECTION 2

A About Events

Defining events

Preparing events

Selecting events

Event cancellation

Events lists

Registering events

Event submission & forms

Event guidance

Event assessment

Defining Events

An **event** is any entry that a student submits or presents at ESC or any sport, quiz or other competition they participate in. Some events are individual, while others are team/group events.

Students participating in ESC can choose to participate in or submit events from **7 categories**:

- Academics
- Art
- Photography
- Needle & Thread
- Sport
- Music
- Platform (Drama)

Events are also **classified** in the following ways:

- **Performance** (an event that takes place 'live' at ESC, e.g. a vocal solo) **OR** **non-performance** (an event that is submitted or prepared beforehand, e.g. a photo or science exhibit)
- **Elimination** (events that are part of a knock-out tournament)
- **Sport** (any sports event)
- **ESC Only** (events that are offered at ESC but not eligible for qualification for ISC—the International Student Convention)

These classifications are largely in place to help with timetabling and to ensure students take part in a variety of events without overburdening themselves.

Event classifications are indicated alongside each event in the Events Lists on the following pages.

Preparing Events

Early preparation is key. Assist students in selecting events as soon as possible, and prepare a timetable for each entry.

Read the guidelines for each event **before** starting preparation, and check the submission deadlines to be sure you have enough time allocated for practice/preparation and don't miss out on submitting your entries.

Selecting Events

Students are encouraged to try new things while also continuing to work on areas of strength. Therefore, choosing events from a variety of categories is advised.

The number of events students may take part in differs for Junior and Senior Convention.

For Junior Convention options, refer to the *Junior Convention Events List* on the following pages or refer to the *Junior Event Guidelines*.

For Senior Convention only:

Please take note of the following limits that apply to each **Senior** participant.

- **Minimum** number of events is 3.
- **Maximum** number of events is 12.
- At least 2 events must be non-sporting events.
- Maximum number of **elimination events** is 3.
- Maximum number of **sporting events** is 5
**Swimming will not count towards the five sporting events, but will count towards the total of 12 events allowed.*
- Maximum number of **swimming events** is 2.
- Maximum number of **performance events** is 8.
- Maximum number of **photography entries** is 3.

The following are 'free events' and do not count towards the limit totals indicated above.

- **Either** Vocal Ensemble **OR** Group Bible Speaking
- Golden & Christian Awards

Event Cancellation

While we try to avoid cancellations as much as possible, we may also need to cancel certain sporting events on the day due to weather conditions or other unforeseen circumstances. It may also be necessary to cancel some team events if insufficient entries are received. Advance notice will be given in this case.

Students may withdraw from events at any time; however, to assist with planning, we kindly request that where possible this is done by the 'Event change' deadline.

Events List | Senior Convention

Academics

Event	Group Size	Event	Group Size
Bible Memory Test ^P	Individual	Essay Writing ^N	Individual
Draughts ^{P E}	Individual	Poetry Writing ^N	Individual
Chess ^{P E}	Individual	Short Story Writing ^N	Individual
Spelling ^P	Individual	Website Design ^N	Group of 1 or 2
Science Exhibit (Collection) ^N	Group of 1 or 2	PowerPoint (Linear) ^N	Group of 1 or 2
Science Exhibit (Research) ^N	Group of 1 or 2	PowerPoint (Non-linear) ^N	Group of 1 or 2
Science Exhibit (Engineering) ^N	Group of 1 or 2	Golden Apple (Proverbs) ^N	Individual
Science Exhibit (Theoretical) ^N	Group of 1 or 2	Golden Lamb (John) ^N	Individual
Social Stud. Exhibit (Collection) ^N	Group of 1 or 2	Golden Harp (Psalms) ^N	Individual
Social Stud. Exhibit (Research) ^N	Group of 1 or 2	Christian Soldier ^N	Individual
PACE Bowl (Quiz) ^{P E}	Team of 4	Christian Worker ^N	Individual
Bible Bowl (Quiz) ^P	Team of 3-5	Golden Lamp ^{N ESC}	Individual
		Consecutive Word Count ^P	Individual

Art

Event - 2D Art	Group Size	Event - 3D Art	Group Size
Oil ^N	Individual	Wood Construction ^N	Individual
Watercolour ^N	Individual	Wood Turning ^N	Individual
Acrylics ^N	Individual	Woodcarving ^N	Individual
Sketching ^N	Individual	Marquetry ^N	Individual
Pen & Ink ^N	Individual	Clay Sculpture ^N	Individual
Coloured Pencils ^N	Individual	Metalworking ^N	Individual
Pastels (Oil) ^N	Individual	Scrapbooking ^N	Individual
Pastels (Chalk) ^{N ESC}	Individual		

Needle & Thread

Event	Group Size	Event	Group Size
Dressmaking/Sewing ^N	Individual	Crochet ^N	Individual
Counted Cross-Stitch ^N	Individual	Knitting ^N	Individual
Embroidery ^N	Individual	Quilts ^N	Individual

Photography

Event	Group Size	Event	Group Size
Scenic (Monochromatic) ^N	Individual	Scenic (Colour) ^N	Individual
Still Life (Monochromatic) ^N	Individual	Still Life (Colour) ^N	Individual
Plants & Animals (Mono) ^N	Individual	Plants & Animals (Colour) ^N	Individual
Character Trait Picture (Mono) ^N	Individual	Character Trait Picture (Colour) ^N	Individual
Photo Journalism (Mono/Colour) ^N	Individual	Special Effects (Colour) ^N	Individual
		Computer Enhancement (Colour) ^N	Individual

Sports

Track & Field Events/Netball	Group Size	Other Sport Events	Group Size
100m* ^{P S}	Individual	Table Tennis Singles* ^{P S E}	Individual
200m* ^{P S}	Individual	Tennis Singles* ^{P S E}	Individual
400m* ^{P S}	Individual	Badminton Singles* ^{P S E}	Individual
800m* ^{P S}	Individual	5-a-side Football* ^{P S}	Team of 5-8
1600m* ^{P S}	Individual	Volleyball (Mixed) ^{P S}	Team of 6-10
4x100m Relay* ^{P S}	Team of 4	Swimming: 50m Backstroke* ^{P S}	Individual
Long Jump* ^{P S}	Individual	Swimming: 50m Free (Crawl)* ^{P S}	Individual
Shot* ^{P S}	Individual	Swimming: 50m Breaststroke* ^{P S}	Individual
Netball (Female) ^{P S}	Team of 7-10	Swimming: 50m Butterfly* ^{P S}	Individual
		Swimming: 50m Ind. Medley* ^{P S}	Individual

Events with an * have both male and female categories.

Music

Event	Group Size	Event	Group Size
Vocal Solo (Male) ^P	Individual	String Bowed Solo ^P	Individual
Vocal Solo (Female) ^P	Individual	Woodwind Solo ^P	Individual
Vocal Duet ^P	Group of 2	Brass Solo ^P	Individual
Vocal Trio/Quartet ^P	Group of 3-4	Miscellaneous Instrumental Solo ^P	Individual
Vocal Ensemble ^P	Group of 5+	Instrumental Group ^P	Group of 2-5
Worship Band ^{P ESC}	Group of 3-10	Music Composition ^N	Individual
Piano Solo ^P	Individual	Music Arranging ^N	Individual
String Plucked Solo ^P	Individual		

^N - Non-performance ^P - Performance ^E - Elimination ^S - Sport ^{ESC} - Only available at ESC (not ISC)

Events List | Senior Convention (continued)

Platform

Event	Group Size	Event	Group Size
Oratory ^P	Individual	Group Bible Speaking ^P	Group of 5-30
Dramatic Monologue ^P	Individual	Dramatic Dialogue ^P	Group of 2
Expressive Reading ^P	Individual	One Act Play ^P	Group of 3-5
Famous Speech ^P	Individual	Illustrated Storytelling ^P	Individual
Poetry Recitation ^P	Individual	Puppets ^P	Group of 2
Preaching (13-15) (Male) ^P	Individual	Scripture/Character Trait Video ^N	Group of 1-5
Preaching (16+) (Male) ^P	Individual	Radio Programme ^N	Group of 1-5

N - Nonperformance P - Performance E - Elimination S - Sport ESC - Only available at ESC (not ISC)

Events List | Junior Convention

Junior students may participate in 5 junior events and a selection of senior events. See below for details.

Choose a maximum of one event from each category:

Category	Event Options	Group Size
Academics (choose one) ^N	Essay Writing OR Short Story Writing	Individual
Art & Design (choose one) ^N	Photography (Colour photo Scenic/Plants & Animals) OR 2D Art (Sketching or Acrylics) OR Crochet	Individual
Music (choose one) ^P	Vocal Solo OR Instrumental Solo OR Junior Vocal Group	Individual Group of 2-5
Platform (choose one) ^P	Expressive Reading OR Poetry Recitation OR Dramatic Dialogue OR Junior Drama Group	Individual Group of 2-5
Sport (choose one) ^P	100m sprint OR 800m run	Individual

Student may also participate in the following Senior Events:

- Golden Lamp
- Chess **OR** Draughts
- Group Bible Speaking
- Vocal Ensemble **+**
- **Junior** Football (Mixed Team)

Junior students may not join senior sporting events for health & safety reasons.

Registering Events

See page 18 for details on how to register students for their chosen events. Details on how to change event choices are also included here.

Submitting Events

Events are submitted in different ways and at different times. Most events are submitted or presented live at ESC, but there are some events that are pre-judged, and these must be **submitted ahead of time**. These events are called Early Entries.

Early Entries

Early Entries must be submitted by the Early Entry deadline (see page 23 or the website for dates) in order to qualify for judging.

The following are Early Entry events:

- Essay Writing
- Poetry Writing
- Short Story Writing
- Photography (*digital copy only*)
- 2D Art (*photo only*)
- Web Design
- PowerPoint Presentations
- Music Composition & Arranging
- Radio Programme
- Scripture & Character Videos

***Note:** 2D Art & photography will be pre-judged based on early submissions. However, original framed artwork/photos should be brought along to ESC for display as the judging and results will be finalised on-site only once the original pieces have been viewed.*

Early Entry Submission Guidelines

Early Entries will be submitted through an online portal. Once submissions are open, those who have registered will be sent a link to upload entries.

Please **do not post or email** entries to us.

Details on submission guidelines for each event will be available in the ESC Guidelines and on the ESC website. Please be sure to read these before submitting events.

Any judges' forms or affidavits will be available online as part of the submission process.

Submitting Events (continued)

On-Site Events

All events not included as Early Entries will be submitted/presented live at ESC. Students are responsible to provide the necessary **forms, scripts, music, and photos** for each of these entries.

Below is a **summary** of what might be required for events, but please refer to the ESC Guidelines for specifics on what is required for each event.

- Judges' forms (usually 3 copies) - These can be downloaded from the ESC website.
- Script or music (usually 3 copies)
- A colour photo of the student/group performing (platform & music)
- A colour photo of garment being modelled (needle & thread)

Please submit all required documentation in one poly-pocket.

Please ensure you use the **latest** Judges' Forms from the ESC website to avoid submitting out-of-date forms.

Forms are not needed for most **sporting events**. Team lists can be submitted online.

Team Events

Schools/TEACH families may join a different school/TEACH family in order to complete a team; this is the responsibility of the school/TEACH. (Home schools, contact TEACH for information.)

The ESC Office cannot find teams for every individual, and unfortunately any incomplete team at the time of the entries closing will be unable to compete.

Each team is responsible for indicating reserves. A team will not be allowed to replace a participant with a person not on the final team sheet without permission from the ESC Office.

Team lists will be submitted online on the ESC website. Details on how to do this will be sent to registered schools/families when entry submissions open.

Event Guidance

Specifics on the criteria for each event can be found in the **ESC Guidelines**. Below are some **clarifications** on some of these guidelines, as well as pointers for annual events for **easy reference**.

Bible Bowl

The books to be used for Bible Bowl in 2023 are:

Exodus, Judges, Psalms, 2 Samuel, Zephaniah, Jonah, Haggai, Mark, 1 Thessalonians, Philippians, and Hebrews.

Scripture/Character Trait Video

Students create a video using *either* 1 of the 90 character traits of Jesus from the PACEs *or* the Scripture passage in Psalm 104: 1-24.

Group Bible Speaking

Group Bible Speaking is a memorised interpretation of a set passage of Scripture by a spoken choral group of 8 - 30 participants. Select one of the passages listed below:

- Genesis 15:1-18
- Deuteronomy 6:1-25
- Ruth 4:1-17
- Micah 7:1-20
- Luke 15: 11-32
- Romans 8:18-39
- Revelation 21:1-27

**If you have already started preparing using another passage, please contact the ESC office to discuss.*

Photography

Please read all Photography guidelines carefully to ensure you enter into the correct category.

Remember:

- Students may use any camera for all entries (except Special Effects).
- Computer software may be used only for red eye, cropping, rotating, colour balance and tonal adjustment (lightness, darkness and contrast - not enhancement), and printing. No other enhancement is allowed in general categories.

Entry Content

All entries, including art, photography, and needle & thread, should meet the dress code guidelines for ESC. Also, no entry should attempt to portray Jesus' face.

Event Assessment

Events will be assessed by a panel of judges who will award points according to the criteria on the ESC Judges' Forms. Based on these scores, students will be awarded places from 1 - 10 in most instances.

Some elimination and sporting events will only award first through third places.

Minimum Score Policy

Our goal is to encourage everybody to participate, while at the same time maintaining a standard and challenging to do better.

In order to maintain this level of excellence, students will not be awarded a first place simply because they achieve the highest score in a category. Similarly, there will be no automatic first places if there is only one entry. Minimum scores will be applied in order to achieve first through sixth places.

Feedback

Students will receive feedback from the judges on each entry. This may be given verbally or through comments on the judges' forms.

When given in writing, senior students will receive their full completed judges' forms back. Junior students will receive comments only.

Certificates & Awards

Following ESC, every student who participates will receive a certificate listing all the events they participated in as well as any places earned. Medals for first through third places will be given out at Evening Rallies, as will trophies for team sports and some Scripture memory events.

ISC

Some students may be nominated to attend the International Student Convention (ISC), where students from around the world gather. Nominations are awarded based on the standard of the entry and the requirements set by ACE in the USA.

ICCE

It is possible to gain ICCE credit for your ESC participation. For more information, refer to the ICCE European Handbook. Additional forms may be required.

SECTION 3

Registration

Attendance options & fees

How to register

Event registration

Making event changes

Attendance Options & Fees

There are different options when attending ESC. The fees for each are listed in the table below.

Attendance Option	Early Bird Preregister by 12th March	Standard Fee Preregister by 12th April
Full Board Participant, Sponsor or Guest (incl. accommodation & meals)	£265 per person	£299 per person
Camping Participant, Sponsor or Guest Per pitch (i.e. per tent or caravan) + per person with meals OR + per person without meals	£130 per pitch £195 per person £ 75 per person	£150 per pitch £220 per person £100 per person
Guest (aged 3 - 8 years)	£70 per person	£70 per person
Day Visitors Daily attendance Lunch	£20 per family/day £12 per person/meal	£20 per family/day £12 per person/meal

Early Bird Booking

In order to qualify for the reduced Early Bird fee, the following must be completed by the Early Bird date:

- A **deposit of £50 per person** must be paid.
- The person must be registered through the **online registration** programme.
- Permission **forms** must be submitted online.

Changes to events can still be made after this date. Be sure to refer to the '*How to Make Changes*' document available on the website to avoid accidentally cancelling your registration.

Cancellations

Cancellations up to and including 12th April 2023 will incur a 20% administration charge. Unfortunately, no refunds are possible after this date as final figures need to be confirmed with the venue in advance. *Exceptions: Cancellations for medical emergencies will not incur a charge.*

How To Register

Bookings will open on 15th February.

To register, follow the process below:

1. Go to christian.education/esc and click on 'Register'.
2. You will be redirected to the registration site where you can register your school/home school and add students, sponsors and guests. (A tutorial on using the registration site will be available.)
3. Pay initial deposits as part of step 2.
4. You will receive an **email** confirming your booking. This will also include a link to the **Form Submission** portal.
5. Follow the link to **submit forms** for each student.
 - Refer to the ESC Registration Checklist to ensure all necessary forms are submitted.
 - Schools may forward to links to parents to complete the forms. (Ask the parents to save the form and send you the link to access the saved version, so that you can check it and make the final submission.)

Booking & Payment Deadlines

As stated above, payments will be managed through the online booking website.

Payments deadlines are as follows:

Early Bird:

- Pay £50 deposit by 12th March 2023 to qualify for Early Bird booking.
- Pay the balance due by 12th May 2023.

Standard Registration:

- Pay £50 deposit by 12th April 2023.
- Pay the balance due by 12th May 2023.

You will have the option to pay in instalments, but will need to have paid the minimums indicated by the cut-off dates above.

Event Registration

As you register students online, you will have the option to add their chosen events to their registration. Follow the 2022 tutorial video for guidance as the process remains the same this year.

Should you skip this step at the time of registration or need to make changes later, please follow the steps listed under *Making Event Changes*.

Making Event Changes

Events changes may be made up to and including 12th May 2023. After this date, events may be removed, but no events may be added.

To change student selections, follow the process below:

1. Go to the booking site.
2. Select 'Already Registered' and log in with email address and confirmation number.
3. Click on 'Modify'.
4. Click on 'Registration' alongside the student whose events you want to change.
5. Click 'next' to move through to the events page.
6. Add events by clicking 'Add to Agenda' and remove by selecting 'Remove from Agenda'.
7. Click next and continue this process for all students.
8. When you have made all the changes you need to, click 'next' until you reach the final page where you can check your changes.
9. If you are happy, click 'Finish'. (If you need to make further changes, click 'Previous' and continue as in previous steps.)

IMPORTANT!

Do NOT click CANCEL at any point as this will cancel your registration.

If you have any questions or need help with changing events, please contact us.

To delete events after 12th May, please email events@christian.education.

SECTION 4

Additional Info

Sponsors

Behaviour & dress code

Volunteer opportunities

Helpful documents

Important Dates

Sponsors

Sponsors are adults (21 years and over) who are responsible for supervising students.

There must be one male sponsor for every one to eight male students and one female sponsor for every one to eight female students. Home-educating parents may serve as the sponsor for their *own* children (father/daughter, mother/son). Home-educating parents may also sponsor students from other home-educating families, provided the above ratios and requirements are met.

Any person sponsoring students who are not their own children must have a valid DBS certificate.

Sponsors are responsible to safeguard the students in their care while also leading these students in following the ESC dress and conduct guidelines. They are also expected to be with, or know the whereabouts of, their students at all times. Furthermore, sponsors are responsible for the pastoring and welfare of their students throughout ESC, including travel to and from the event.

A *Sponsors' Handbook* will be provided to all registered sponsors to guide them in fulfilling these responsibilities.

Behaviour & Dress Code

Sponsors and students should adhere to the ESC code of conduct. This includes treating others as one would like to be treated—i.e. being considerate, respectful and sensible. Inappropriate behaviour such as swearing, booing, bullying or disrespectful attitudes will not be accepted and will be addressed appropriately.

In addition, as a professional educational event, ESC has an established dress code that should be followed. This will be provided to all registered schools/home schools and is also available on request.

More detail on the code of conduct and the expected dress code are available in the *Sponsors' Handbook*.

If you have any questions about behaviour and dress code, please do email the office on events@christian.education and ask for advice.

Volunteer Opportunities

ESC depends on the availability of volunteers. There are various opportunities for people to volunteer their time and skills to help in providing a valuable event for the participants.

Judges

If you have qualifications or experience in any of the event categories and would like to give your time to judge entries, please do email events@christian.education to find out more.

Judging can take place before or during ESC, depending on the event. The time commitment required varies based on the event criteria and number of entries, so you could offer as little or as much time as you have.

Schools, please designate at least one person who would be willing to be a judge. More judges are welcome too.

24-7 Team

The 24-7 Team is integral to the success of ESC!

This team is made up of recent graduates (aged 18+) who want to give back and be a blessing to the students. Applicants should be enthusiastic and full of energy, willing to serve and encourage the participants. It is also a great opportunity to reconnect with old friends and make new ones as you work (and have fun) together!

Apply through the ESC booking website. Successful applicants will receive a discount on their ESC experience.

ESC Team

Older graduates and current/former school staff members and home educators who would also like to be involved in helping to run the event are very welcome.

If you feel you have something to offer but don't want to be a judge or join the 24-7 team, please email us on events@christian.education to see how you could help.

Helpful Documents & Resources

There are a number of documents that will help you as you prepare for ESC. In addition to this What You Need to Know booklet, visit the downloads section of our website (christian.education/esc) to find the latest documents mentioned in this booklet. These include:

- Senior Event Guidelines
- Junior Event Guidelines
- Registration Checklist
- Blank Judges Forms
- Registration Tutorial (video)

Other documents, like the *Sponsors' Handbook* and *Dress Code Guidelines*, will be provided after registration.

Please remember to visit the website (www.christian.education/esc) regularly for updates. Also look out for emails from events@christian.education.

DATES TO REMEMBER

15 February 2023

Registrations open - Visit www.christian.education/esc to book your place.

12 March 2023

Early Bird Registration - Register by this date to secure the Early Bird price!

12 April 2023

Final Registration - Register by this date to secure your place at ESC.

12 May 2023

Final Event Changes - All event changes should be completed.

Final Payment - Full balance of fees to be paid.

Early Entry Submission - Last day for submitting early entries

3 - 7 July 2023

ESC!!! - Live at Kingham Hill School

Questions?

Contact us:

+44 1793 783783

events@christian.education

www.christian.education/esc