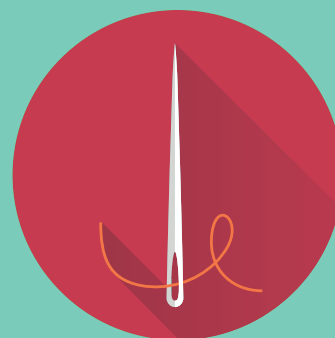


# Junior Student Convention Guidelines



# What is student convention?

European Student Convention (ESC) is a fantastic opportunity for students to exercise their skills and talents through practice and friendly competition.

Friends, family, classmates, and colleagues gather together (online in 2021) in an environment that inspires creativity, motivation, and aspiration.

This event exists to highlight to students the value of their abilities, give them vision for how they can grow in these talents, and expose them to new prospects that they can be part of.

When combined with dynamic evening rallies with inspiring speakers and heart-felt worship, this is an event not to be missed.

## Why a junior convention?

Junior convention is a wonderful way to introduce younger students to ESC in a relaxed and fun environment, and will prepare them more thoroughly for the step up to the senior events.

By running the junior convention alongside the senior event, younger students will also have the opportunity to see the entries from the older students and be prepared for what is expected at the senior level.

## How is junior convention different?

Junior convention differs from the senior event in the following ways:

- Students have a more specific range of events to choose from, allowing them to be able to participate without becoming overwhelmed by the choices.
- Students will be given helpful and encouraging comments rather than a full judges' form.



## When and where is junior convention?

Junior convention runs at the same time as the senior European Student Convention.

**Dates:** 8th - 10th June 2021

**Venue:** Online

See the *What You Need to Know* or visit the website for more information.

## What are the costs?

<b>Sponsor</b> (only one sponsor needed per school)	<b>£10</b>
<b>Student</b>	<b>£49</b>

*Students will receive:*

- + Access to all rallies
- + 3 - 6 online training sessions/workshops
- + Passport
- + Gift pack
- + Participation certificate
- + Medals (if achieved)

*A surcharge of £10 per person applies for bookings after 2 April.*

# Student eligibility

Students between the ages of 10 and 12 are eligible to participate in the events. They must be turning 10 during the current academic year (before 31 July) and must not have reached their 13th birthday by this same date. (12 year olds may choose to participate in the senior convention if they prefer.)

Participants must currently be using the Accelerated Christian Education curriculum in a Christian school or through home education with TEACH. They must attend the entire convention, including rallies and workshops.

## Event options & limits

Students may enter a maximum of one event in each of the following categories, i.e. a maximum of **six events** in total:

- Academics
- Art & Design (i.e. 2D Art, Photography)
- Sport
- Music
- Platform
- Chess/Draughts

See the following pages for details on the events available in each category and the criteria for each.

Students may also enter the **Golden Lamp Award** and **Distance Award**. See the ESC Guidelines or contact the office for details on this event. Students may also join Senior team events. (Contact the office to discuss this option.)



All entries to be presented in the English language. We apologise that we are not able to grant any exceptions.



All Bible quotes must be from the King James Version or New King James Version.

# How to register

## Step 1 - Register students & events online

Register the students online at [christian.education/esc-online](http://christian.education/esc-online). Bookings open 19 March.

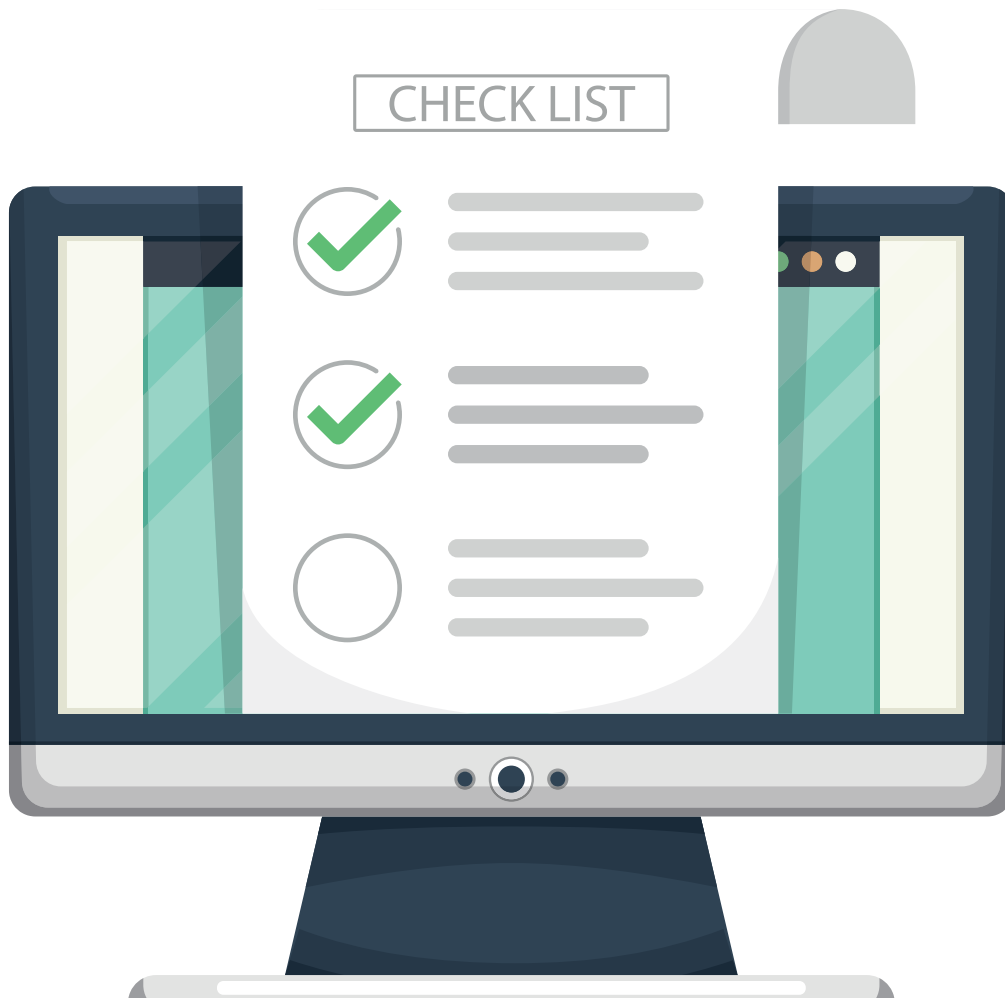
## Step 2 - Complete & submit CF6x form online

Complete and submit the signed CF6x form online. This will be on the Downloads page of the booking site.

## Step 3 - Make payment online

Payment can be made when registering (either in full or in instalments). Ensure that a minimum of the £15 required deposit is paid by 2 April to secure your Early Bird booking.

**Note: Register any sponsors as you would for ESC.  
A tutorial will be available on the booking site.**



# ACADEMICS

Choose one of the following events:

- Essay Writing
- Short Story Writing

## Essay Writing Guidelines

- The student chooses a topic and writes a paper. The theme may be evangelistic, inspirational, Biblical, Christian growth, patriotic, or historical.
- A good essay will use facts, arguments, examples, and illustrations that allow the reader to persuade himself of the truth he is reading.
- Plagiarism of any kind will automatically disqualify the entry.
- Length: 200 – 300 words
- Format: Typed double-spaced on plain white paper; one full inch margin on all sides. On a computer use 10- to 12-point type. No heavy, bold, or fancy fonts. (Recommended fonts: Helvetica, Calibri, Verdana, or Arial.)
- Submit online:
  - a. Comments Form (J01) incl. Creative Composition Affidavit (CF28).
  - b. Outline and Essay as one document  
(To be uploaded with the form as a PDF.)

**These events must be submitted by 7 May.**

## Short Story Writing Guidelines

- The student writes and submits a fiction composition. The story may be based on real experience; it may be purely imaginary; or it may be a fictionalized report of an historical happening.
- The story must have an evangelistic, Biblical, Christian growth, patriotic, or historical theme.
- Plagiarism of any kind will automatically disqualify the entry.
- Length: 200 – 300 words
- Format: Typed double-spaced on plain white paper; one full inch margin on all sides. On a computer use 10- to 12-point type. No heavy, bold, or fancy fonts. (Recommended fonts: Helvetica, Calibri, Verdana, or Arial.)
- Submit online:
  - a. Comments Form (J02) incl. Creative Composition Affidavit (CF28).
  - b. Short Story (To be uploaded with the form as a PDF.)



# ART & DESIGN

Choose one from the following events:

- Photography (Colour photo: scenic or plants & animals)
- 2D Art (Sketching or acrylics)

**These events must be submitted online by the following dates:**

**Photography - 7 May     |     2D Art - 14 May**

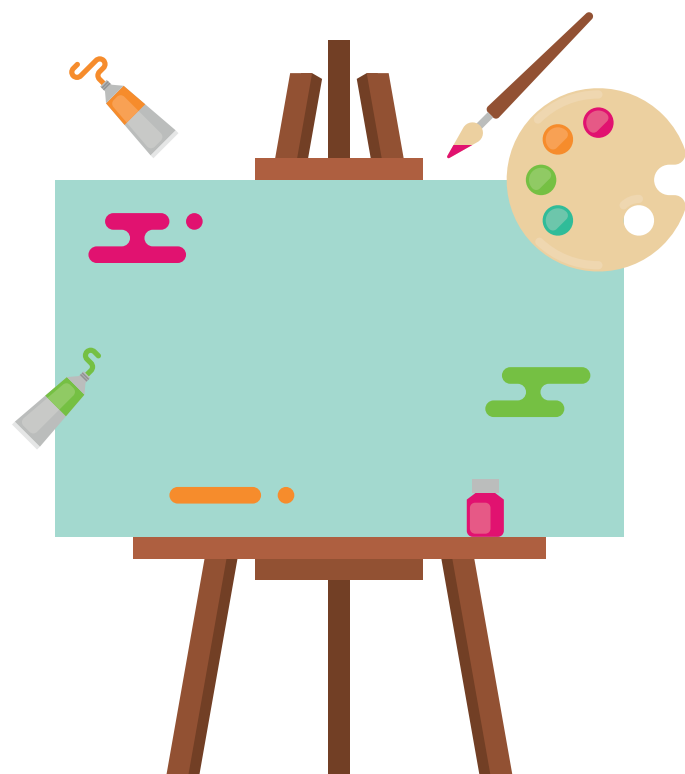
## Photography Guidelines

- Contestants must submit a colour photograph of any of the following:
  - \* A picturesque outdoor setting
  - \* A photo of living animals, birds, insects, flowers or plants in their natural or unnatural habitat
- Entries must be the sole work of the student.
- Entries should be approximately 8" x 10" (20 x 25cm).
- Subjects in entries MUST conform to A.C.E. Student Convention dress standards.
- Only one photo may be entered.
- Students may use any camera for all entries. Computer software (such as Adobe ® Photoshop ®, Adobe® Illustrator®, CorelDRAW ®) may be used for red eye, cropping, rotating, color balance and tonal adjustment (lightness, darkness, and contrast—not enhancement), and printing only.
- Submit online:
  - a. Comments Form (J03)
  - b. Photo entry (To be uploaded with the form.)



## 2D Art Guidelines

- Contestants should submit a piece of artwork using any of the following mediums:
  - \* Pencil (Sketching)
  - \* Acrylic Paints
- All entries should be A4 size or smaller.
- Entries must be the sole work of the student.
- Students are encouraged to draw from their own ideas for subject matter and composition, rather than copying other artwork.
- No mixed-media entries allowed.
- Entries must meet ALL A.C.E. standards as far as dress codes and suitable subject matter are concerned. NB! All subjects of artwork should be dressed according to the A.C.E. Student Convention dress standards.
- All entries must be done in realistic style—no abstract or cartoon styles. No collages, pop art, or graphic design.
- No artwork should attempt to portray the face of Christ.
- Colour-by-number paintings will not be accepted.
- Only one piece of artwork may be entered.
- Submit online:
  - a. Comments Form (J04).
  - b. Photo/scan of entry (see details in senior Art guidelines). To be uploaded with the form.
  - c. Optional: Recording of your progress (see details in senior Art guidelines). To be uploaded with the form.



# MUSIC

Choose one from of the following events:

- Vocal Solo
- Vocal Groups
- Intrumental Solo

## Vocal Guidelines

- Students can enter one of the following:
  - \* Vocal Solo
  - \* Vocal Group (2 - 4 singers)
- Time limit: 3 - 4 mins
- Song selections are to be Christian rather than secular. See the ESC Music Guidelines for more details on what is acceptable.
- Contestants may sing a cappella; be accompanied by an adult or student (of convention age) playing a piano; or use an accompaniment tape/CD (piano only).
- All entries must be memorised.
- For group entries, the melody and at least one harmony should be sung.
- There should be a preselected spokesperson for each group who will introduce the group, the school/family represented, and the title of the song to be performed. (This is not counted against performance time.)
- Submit online:
  - a. Comments Form (J05, J06 as appropriate)
  - b. Recording of entry (To be uploaded with the form.)

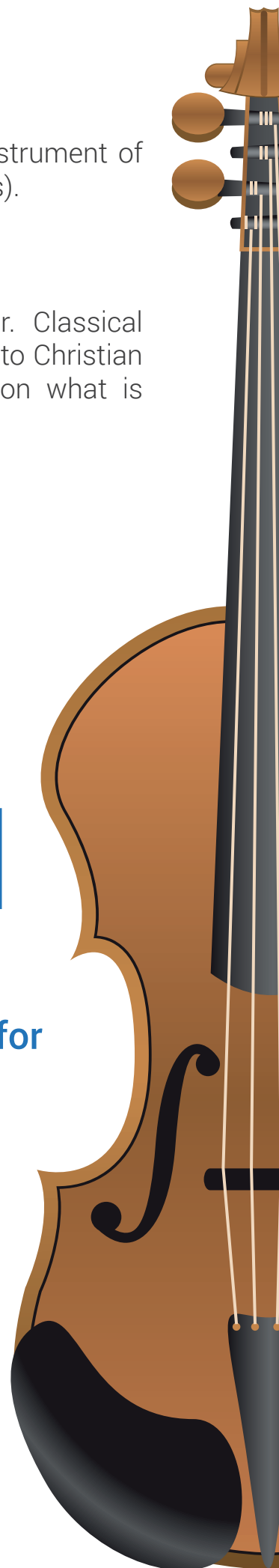
## Instrumental Guidelines

- Students can enter an instrumental piece played on the instrument of their choice (piano, string, brass, woodwind or miscellaneous).
- Time limit: 3 - 4 mins
- Song selections are to be Christian rather than secular. Classical instrumental music is allowed as long as it is non-offensive to Christian values. See the ESC Music Guidelines for more details on what is acceptable.
- All entries must be memorised.
- Submit online:
  - a. Comments Form (J07)
  - b. Recording of entry (To be uploaded with the form.)

**These events must be submitted by 21 May.**

**See the 'Submitting Your Recordings' guidelines for details on how to record your entries.**

*Read the European Student Convention music guidelines for additional tips when preparing your music entries.*



# PLATFORM

Choose one from the following events:

- Expressive Reading
- Poetry Recitation
- Group Drama (Group Bible Speaking or Drama Skit)

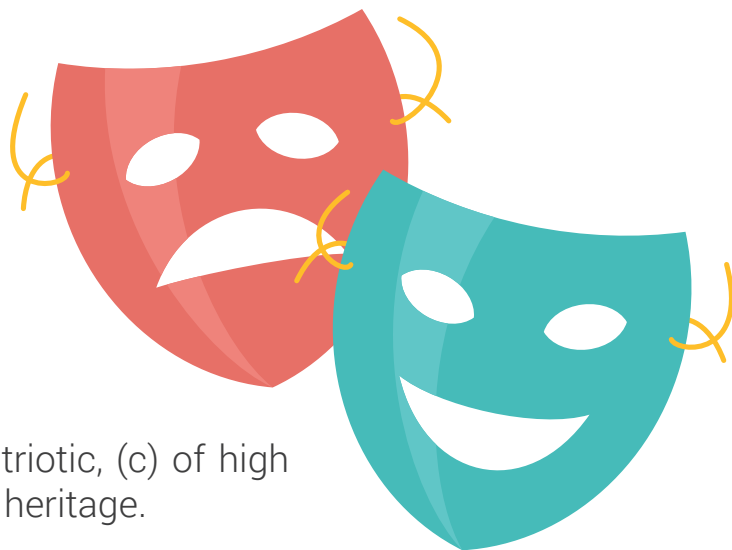
## Expressive Reading Guidelines

- An expressive reading is a memorised interpretation by a contestant of a reading which consists of a dialogue between two or more people or a reading in the first person. The reading must have a moral and/or Scriptural value, or must highlight Christian heritage or patriotism. (Poetry or stories with a plot, climax, and ending cannot be included.)
- Time limit: 3 - 4 mins
- The script may be self-written, an excerpt from the Bible, or an excerpt from a book.
- Create an atmosphere by using tone of voice, inflections, pauses, gestures, and movement (utilize space available).
- All entries must be memorised.
- No costumes, props, sets, or singing allowed.
- Submit online:
  - a. Comments Form (J08)
  - b. Recording of entry (To be uploaded with the form.)



## Poetry Recitation Guidelines

- The contestant chooses a poem to recite by memory, using all the skills of a good dramatic presentation.
- Poem length: 20 lines or more (not longer than 4 minutes)
- The poem may be: (a) Biblical, (b) patriotic, (c) of high moral content, (d) about our Christian heritage.
- All entries must be memorised.
- No costumes, props, or singing allowed.
- Hint: Contestants should avoid choppy presentations. Deliver complete thoughts, not necessarily “line.”
- Submit online:
  - a. Comments Form (J09)
  - b. Recording of entry (To be uploaded with the form.)



*Read the European Student Convention platform guidelines for additional tips when preparing your platform entries.*

**These events must be submitted by 21 May.**

**See the ‘Submitting Your Recordings’ guidelines for details on how to record your entries.**

## Drama Group Guidelines

- Contestants may present a Drama Skit or a Group Bible Speaking.
- Entries must meet ALL A.C.E. standards as far as dress codes and suitable subject matter are concerned.
- Submit online:
  - a. Comments Form (J10)
  - b. Recording of entry (To be uploaded with the form.)

### For the drama skit:

- The play must consist of only one scene.
- Time limit: 3 - 5 minutes
- Groups may consist of 2 - 5 students. Parents/ staff may not participate in any way.
- The play should depict or illustrate: (a) soulwinning, (b) Scriptural truths, (c) our Christian heritage, (d) defense of the Christian faith.
- The play may NOT be: (a) musical, (b) Reader's Theater, (c) choral speaking.
- Players may be used to portray more than one character.
- Only hand props may be used (i.e. no backdrops or large props). Costumes are optional; if used, they must meet A.C.E. dress codes.
- NO firearms may be used. Discharge of blanks, caps, or any explosive is NOT permitted in play production.
  - No recorded speaking or singing will be permitted in play production.
  - Recorded sound effects WILL be accepted (background music, storms, animals, guns, etc.), but the technician must be one of the 5 students participating.
  - Scripts are to be memorised.

### For Group Bible Speaking:

- Group Bible speaking is an interpretation of a Scripture passage by a spoken choral group
- Length: 16 - 24 verses of your choice
- Time limit: 3 - 5 minutes
- Groups must have at least 3 students. There is no maximum group size.
- The group will create an atmosphere by using tone of voice, inflections, pause, gesture and movement (utilizing the space available).
- No costumes, props, or singing allowed.
- The passage must be memorized.
- The majority of the passage is spoken chorally, but lines may be spoken by a section of the group or by solo voices.
- Sound effects created on stage by the contestants may be added.

*You may want to consider the theme when selecting the content of your entries. You will not gain additional points for this, but it may help you focus and narrow down the choices.*

**These events must be submitted by 21 May.**

# SPORT

Choose one from of the following events:

- Keepy-Uppies Challenge
- Tennis Tap-Ups Challenge

**These events must be submitted by 21 May.**



## Athletics Guidelines

- See the Senior Guidelines for these events
- Submit online:
  - a. Relevant Form (see senior Sport Guidelines)
  - b. Recording of entry (To be uploaded with the form.)

**Students may also join the Distance Awards and help toward the goal of reaching 800+ miles together!**  
See the Guidelines for details.



# CHESS/DRAUGHTS

Choose one from of the following events:

- Chess
- Drafts



## Guidelines

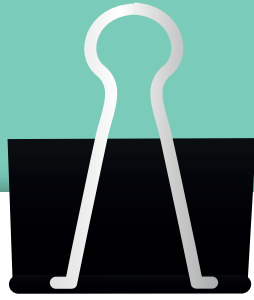
- Students will compete against Senior students.
- Refer to the ESC Senior Guidelines for details on rules.
- The event will take place online 'live' in the week of ESC.
- It is the responsibility of the contestants to be present when their event is run. Students will be disqualified if events are missed.

## JOIN A TEAM EVENT

Students may choose to join senior team events with their school or home school group.

Email [events@christian.education](mailto:events@christian.education) to discuss this option.

*I can do all things  
through Christ who strengthens me.  
(Philippians 4:13)*



# TAKE NOTE

## Other Documents

These guidelines should be read in conjunction with:

- What You Need to Know Booklet
- Senior Guidelines (for some events)
- Submitting Your Recording

## Website

Visit the ESC website for details to stay up to date with developments:  
[www.christian.education/esc-online](http://www.christian.education/esc-online)

## Contact the Office

Should you have any queries or need any assistance, don't hesitate to contact the ESC Office:

Tel: 01793 783 783

Email: [events@christian.education](mailto:events@christian.education)