

Junior Student Convention Guidelines



What is student convention?

European Student Convention (ESC) is a fantastic opportunity for students to exercise their skills and talents through practice and friendly competition.

Friends, family, classmates, and colleagues gather together in an environment that inspires creativity, motivation, and aspiration.

This event exists to highlight to students the value of their abilities, give them vision for how they can grow in these talents, and expose them to new prospects that they can be part of.

When combined with dynamic evening rallies with inspiring speakers and heart-felt worship, this is an event not to be missed.

Why a junior convention?

Junior convention is a wonderful way to introduce younger students to ESC in a relaxed and fun environment, and will prepare them more thoroughly for the step up to the senior events.

By running the junior convention alongside the senior event, younger students will also have the opportunity to see the entries from the older students and be prepared for what is expected at the senior level.

How is junior convention different?

Junior convention differs from the senior event in the following ways:

- Students have a more specific range of events to choose from, allowing them to be able to participate without becoming overwhelmed by the choices.
- All the events will take place in one venue (except sport), so students do not have to run between venues and there is no time pressure.
- Students will be given helpful and encouraging comments rather than a full judges' form.



When and where is junior convention?

Junior convention runs at the same time as the senior European Student Convention.

Dates: 6th - 10th July 2020

Venue: Kingham Hill School, Chipping Norton, United Kingdom

See the *What You Need to Know* or visit the website for more information.

What are the costs?

**All fees below apply to students of junior convention age. Adults pay Senior Convention fees.*

Full Board Junior Participant or Junior Guest	£238
Early Bird (Pre-register by 2 March)	£160
Off Campus Junior Participant or Junior Guest (incl. meals)	
Early Bird (Pre-register by 2 March)	£90
Off Campus Junior Participant or Junior Guest (without meals)	
Early Bird (Pre-register by 2 March)	£165
Camping (*A fee for the pitch and a fee for each student applies)	£155
Per pitch (i.e. per tent or caravan)	£55
+ per junior student with meals OR	
+ per junior student without meals	

A surcharge of £25 per person applies for bookings after 2 March.

Student eligibility

Students between the ages of 10 and 12 are eligible to participate in the events. They must be turning 10 during the current academic year and must not have reached their 13th birthday by this same date. (12 year olds may choose to participate in the senior convention if they prefer.)

Participants must currently be using the Accelerated Christian Education curriculum in a Christian school or through home education with TEACH. They must attend the entire convention, including rallies.

Event options & limits

Students may enter a maximum of one event in each of the following categories, i.e. a maximum of **six events** in total:

- Academics
- Art & Design (i.e. 2D Art, 3D Art, Photography, Needle & Thread)
- Athletics
- Music
- Platform
- Chess/Draughts

See the following pages for details on the events available in each category and the criteria for each.

Students may also enter the **Golden Lamp Award**. See the ESC Guidelines or contact the office for details on this event. Students may also join one Senior team event from a set list. (This is in addition to the six events above.)



All entries to be presented in the English language. We apologise that we are not able to grant any exceptions.



All Bible quotes must be from the King James Version or New King James Version.

How to register

Step 1 - Register students & events online

Register the students online at christian.education. Bookings open 3 February.

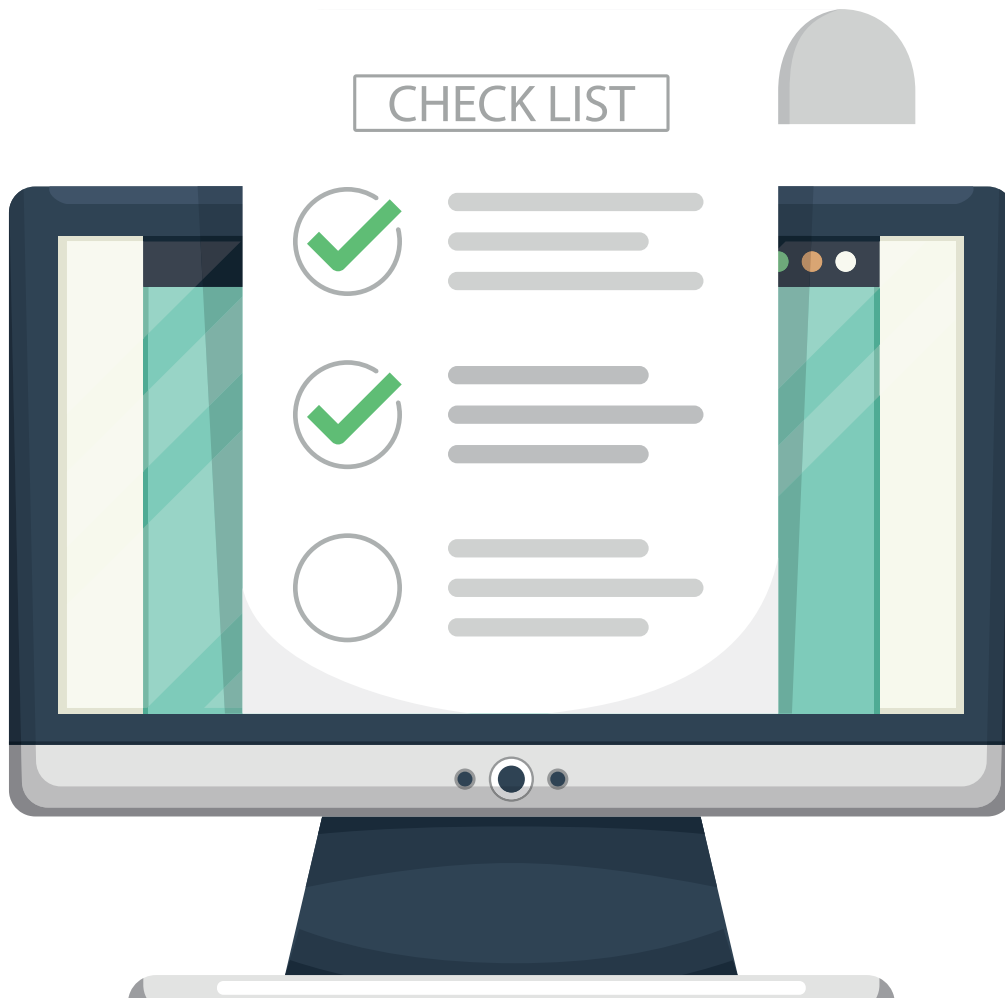
Step 2 - Complete & submit CF6 form

Complete and submit the signed CF6 form to the ESC office by post. This is available for download when registering.

Step 3 - Make payment online

Payment can be made when registering (either in full or in instalments). Ensure that a minimum of the 20% required deposit is paid by 2 March to secure your Early Bird booking.

**Note: Register any sponsors as you would for ESC.
A tutorial will be available on the booking site.**



ACADEMICS

Choose one of the following events:

- Essay Writing
- Short Story Writing

Essay Writing Guidelines

- The student chooses a topic and writes a paper. The theme may be evangelistic, inspirational, Biblical, Christian growth, patriotic, or historical.
- A good essay will use facts, arguments, examples, and illustrations that allow the reader to persuade himself of the truth he is reading.
- Plagiarism of any kind will automatically disqualify the entry.
- Length: 200 – 300 words
- Format: Typed double-spaced on plain white paper; one full inch margin on all sides. On a computer use 10- to 12-point type. No heavy, bold, or fancy fonts. (Recommended fonts: Helvetica, Calibri, Verdana, or Arial.)
- Forms: Submit a copy of the Judges' Response Sheet with all copies of the essay.
- Copies: Three (3) copies of essays must be submitted as an early entry. All copies are to be inserted in a clear plastic page protector with the student's name, school/family name, account number, school address, and telephone number clearly visible. Entries must reach the ESC Office by 24 April.

**These events are Early Entries
and must be submitted to the ESC office
by 24 April.**

Short Story Writing Guidelines

- The student writes and submits a fiction composition. The story may be based on real experience; it may be purely imaginary; or it may be a fictionalized report of an historical happening.
- The story must have an evangelistic, Biblical, Christian growth, patriotic, or historical theme.
- Plagiarism of any kind will automatically disqualify the entry.
- Length: 200 – 300 words
- Format: Typed double-spaced on plain white paper; one full inch margin on all sides. On a computer use 10- to 12-point type. No heavy, bold, or fancy fonts. (Recommended fonts: Helvetica, Calibri, Verdana, or Arial.)
- Forms: Submit a copy of the Judges' Response Sheet with all copies of the story
- Copies: Three (3) copies of short stories must be submitted as an early entry. All copies are to be inserted in a clear plastic page protector with the student's name, school/family name, account number, school address, and telephone number clearly visible. Entries must reach the ESC Office by 24 April.



ART & DESIGN

***Photos and 2D Art events are Early Entries and must be submitted to the ESC office by 24 April.**

Choose one from the following events:

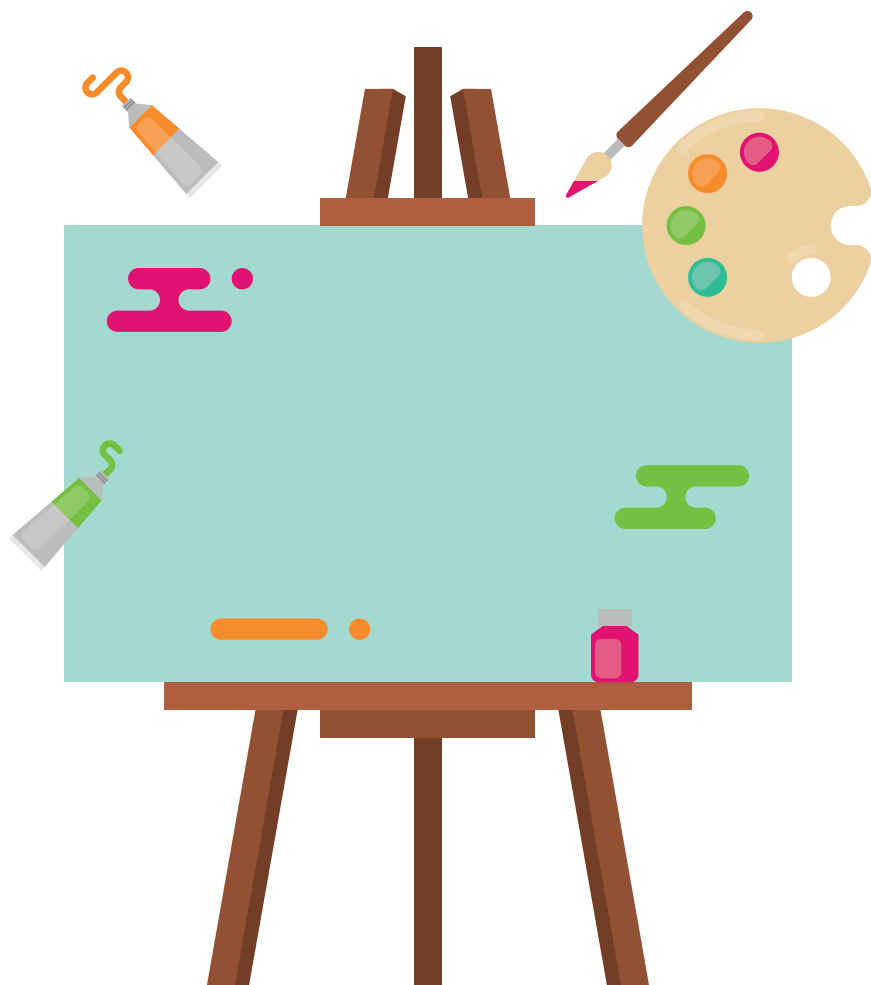
- Photography (Colour photo: scenic or plants & animals)
- 2D Art (Sketching or acrylics)*
- 3D Art (Woodworking or clay sculpture)
- Needle & Thread (Sewing or crochet)

Photography Guidelines

- Contestants must submit a colour photograph of any of the following:
 - * A picturesque outdoor setting
 - * A photo of living animals, birds, insects, flowers or plants in their natural or unnatural habitat
- Entries must be the sole work of the student.
- Entries should be approximately 8" x 10" (20 x 25cm) mounted with a mat (board) approximately 11" x 14" (27.5 x 35 cm) - no frames.
- Entries must arrive for judging in satisfactory exhibition condition. CEE is not responsible for entries lost or damaged.
- Subjects in entries MUST conform to A.C.E. Student Convention dress standards.
- Only one photo may be entered.
- Students may use any camera for all entries. Computer software (such as Adobe ® Photoshop ®, Adobe® Illustrator®, CorelDRAW ®) may be used for red eye, cropping, rotating, color balance and tonal adjustment (lightness, darkness, and contrast—not enhancement), and printing only.
- Submit a copy of the Judges' Response Sheet with all photos. Photos must be clearly marked on the back with the student's name, school/family name, account number, school address, and telephone number.

2D Art Guidelines

- Contestants should submit a piece of artwork using any of the following mediums:
 - * Pencil (Sketching)
 - * Acrylic Paints
- All entries should be A4 size or smaller.
- Entries must be the sole work of the student.
- Students are encouraged to draw from their own ideas for subject matter and composition, rather than copying other artwork.
- No mixed-media entries allowed.
- Entries must meet ALL A.C.E. standards as far as dress codes and suitable subject matter are concerned. NB! All subjects of artwork should be dressed according to the A.C.E. Student Convention dress standards.
- All entries must be done in realistic style—no abstract or cartoon styles. No collages, pop art, or graphic design.
- No artwork should attempt to portray the face of Christ.
- Colour-by-number paintings will not be accepted.
- Only one piece of artwork may be entered.
- Submit a copy of the Judges' Response Sheet with all entries. Artwork must be clearly marked on the back with the student's name, school/family name, account number, school address, and telephone number. Entries must reach the ESC Office by 24 April.



3D Art Guidelines

- Contestants may submit a piece of woodwork or a clay sculpture.
- Entries must be the sole work of the student.
- Entries must meet ALL A.C.E. standards as far as dress codes and suitable subject matter are concerned. NB! All subjects of artwork should be dressed according to the A.C.E. Student Convention dress standards. No weapons of any kind are acceptable. No work should attempt to portray the face of Christ.
- The entry may not exceed one foot in any direction (length, width, or height).
- Submit a copy of the Judges' Response Sheet with all entries. Entries must be labeled with the student's name, school/family name, account number, school address, and telephone number.

For clay sculpture:

- Entries must be entirely hand built and can be made of any clay or polymer clay. The use of slip molds or greenware available from ceramic or craft houses is not allowed.
- Entries may be painted and glazed.
- Some clay sculptures may require kiln-firing to protect the entry.

For woodworking:

- Projects must be made of wood. Any appropriate screws, hinges, fasteners, locks, slides, glass, etc., that are required to bring the project to a functional completion are acceptable; these will not be judged, but the fitting of them to the project will be judged.
- All entries must be accompanied by photos showing the progress of the project.
- Craft items such as miniature toys or models or pre-cut kits are not acceptable.

**Art & Design events are Early Entries
and must be submitted to the ESC office
by 11 April.**

Needle & Thread Guidelines

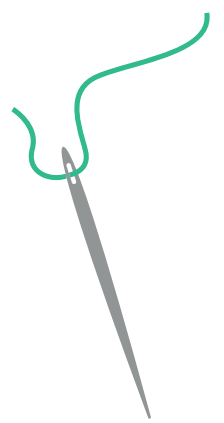
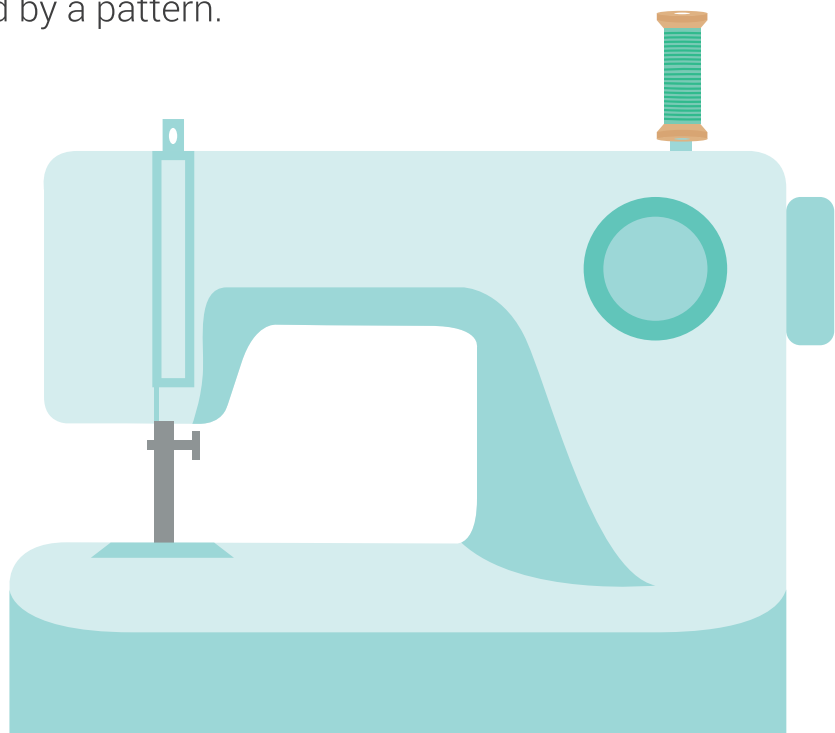
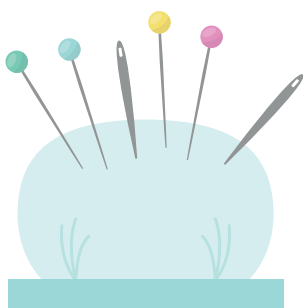
- Contestants should submit one of the following:
 - * Sewing (dress)
 - * Crochet
- Entries must be the sole work of the student and must be complete.
- Entries must meet ALL A.C.E. standards as far as dress codes and suitable subject matter are concerned. NB! All items should meet the A.C.E. Student Convention dress standards.
- Submit a copy of the Judges' Response Sheet with all entries. Entries must be labeled with the student's name, school/family name, account number, school address, and telephone number.

For sewing:

- Students should submit a dress that they can wear.
- Entries should be accompanied by a photo of the student wearing the garment.
- Please also submit the pattern used.

For crochet:

- Students should submit one crocheted item. Examples include: shawls, tablecloths, sweaters, baby garment sets (sweater, cap, mittens, or booties).
- Entries should be accompanied by a pattern.



MUSIC

Choose one from of the following events:

- Vocal Solo
- Vocal Groups
- Instrumental Solo

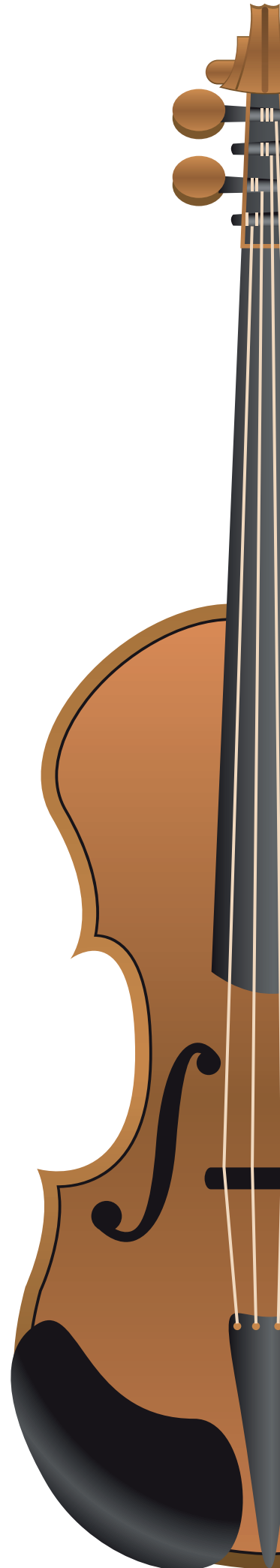
Vocal Guidelines

- Students can enter one of the following:
 - * Vocal Solo
 - * Vocal Group (2 - 4 singers)
- Time limit: 3 - 4 mins
- Song selections are to be Christian rather than secular. See the ESC Music Guidelines for more details on what is acceptable.
- Contestants may sing a cappella; be accompanied by an adult or student (of convention age) playing a piano; or use an accompaniment tape/CD (piano only).
- All entries must be memorised.
- For group entries, the melody and at least one harmony should be sung.
- There should be a preselected spokesperson for each group who will introduce the group, the school/family represented, and the title of the song to be performed. (This is not counted against performance time.)
- Three copies of the Judges' Response Sheet, together with three copies of the arrangement, as performed, must be given to the judges before a performance. These should include score and lyrics.

Instrumental Guidelines

- Students can enter an instrumental piece played on the instrument of their choice (piano, string, brass, woodwind or miscellaneous).
- Time limit: 3 - 4 mins
- Song selections are to be Christian rather than secular. Classical instrumental music is allowed as long as it is non-offensive to Christian values. See the ESC Music Guidelines for more details on what is acceptable.
- All entries must be memorised.
- One piano will be provided. All other instruments are to be provided by the student. No electrical instruments or amplification may be used.
- Three copies of the Judges' Response Sheet, together with three copies of the arrangement, as performed, must be given to the judges before a performance.

*Read the European Student
Convention music guidelines
for additional tips when
preparing your vocal &
instrumental music entries.*



PLATFORM

Choose one from the following events:

- Expressive Reading
- Poetry Recitation
- Group Drama (Group Bible Speaking or Drama Skit)

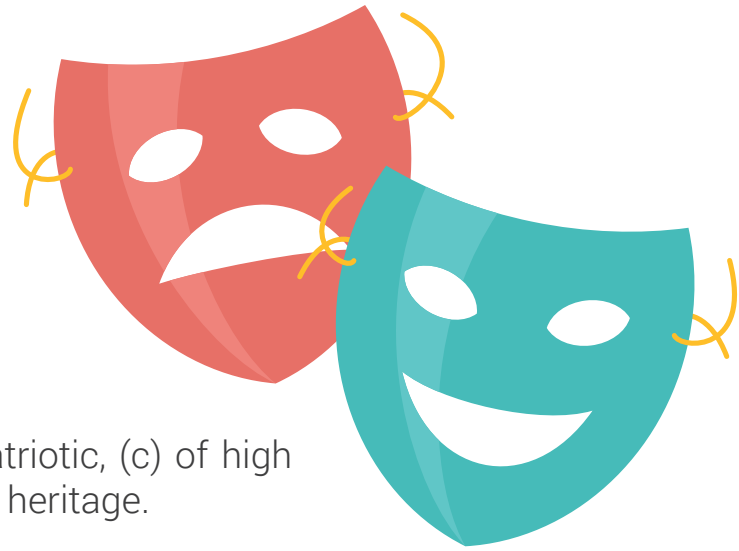
Expressive Reading Guidelines

- An expressive reading is a memorised interpretation by a contestant of a reading which consists of a dialogue between two or more people or a reading in the first person. The reading must have a moral and/or Scriptural value, or must highlight Christian heritage or patriotism. (Poetry or stories with a plot, climax, and ending cannot be included.)
- Time limit: 3 - 4 mins
- The script may be self-written, an excerpt from the Bible, or an excerpt from a book.
- Create an atmosphere by using tone of voice, inflections, pauses, gestures, and movement (utilize space available).
- All entries must be memorised.
- No costumes, props, sets, or singing allowed.
- Three copies of the Judges' Response Sheet, together with three copies of the script, must be given to the judges before a performance.



Poetry Recitation Guidelines

- The contestant chooses a poem to recite by memory, using all the skills of a good dramatic presentation.
- Poem length: 20 lines or more (not longer than 4 minutes)
- The poem may be: (a) Biblical, (b) patriotic, (c) of high moral content, (d) about our Christian heritage.
- All entries must be memorised.
- No costumes, props, or singing allowed.
- Hint: Contestants should avoid choppy presentations. Deliver complete thoughts, not necessarily "line."
- Three copies of the Judges' Response Sheet, together with three copies of the poem, must be given to the judges before a performance.



*Read the European Student Convention
platform guidelines
for additional tips
when preparing
your platform entries.*

Drama Group Guidelines

- Contestants may present a Drama Skit or a Group Bible Speaking.
- Entries must meet ALL A.C.E. standards as far as dress codes and suitable subject matter are concerned.
- Three copies of the Judges' Response Sheet, together with three copies of the script, must be given to the judges before a performance.

For the drama skit:

- The play must consist of only one scene.
- Time limit: 3 - 5 minutes
- Groups may consist of 2 - 5 students. Parents/ staff may not participate in any way.
- The play should depict or illustrate: (a) soulwinning, (b) Scriptural truths, (c) our Christian heritage, (d) defense of the Christian faith.
- The play may NOT be: (a) musical, (b) Reader's Theater, (c) choral speaking.
- Players may be used to portray more than one character.
- Only hand props may be used (i.e. no backdrops or large props). Costumes are optional; if used, they must meet A.C.E. dress codes.
- NO firearms may be used. Discharge of blanks, caps, or any explosive is NOT permitted in play production.
 - No recorded speaking or singing will be permitted in play production.
 - Recorded sound effects WILL be accepted (background music, storms, animals, guns, etc.), but the technician must be one of the 5 students participating.
 - Scripts are to be memorised.

For Group Bible Speaking:

- Group Bible speaking is an interpretation of a Scripture passage by a spoken choral group
- Length: 16 - 24 verses of your choice
- Time limit: 3 - 5 minutes
- Groups must have at least 3 students. There is no maximum group size.
- The group will create an atmosphere by using tone of voice, inflections, pause, gesture and movement (utilizing the space available).
- No costumes, props, or singing allowed.
- The passage must be memorized.
- The majority of the passage is spoken chorally, but lines may be spoken by a section of the group or by solo voices.
- Sound effects created on stage by the contestants may be added.

You may want to consider the theme when selecting the content of your entries. You will not gain additional points for this, but it may help you focus and narrow down the choices.

ATHLETICS

Choose one from of the following events:

- 100m Sprint
- 800m Run



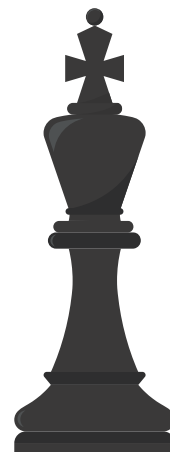
Athletics Guidelines

- Students will compete in the 10 - 12 age group.
- Winners will be determined based on the fastest times in the heats. Finals will only be run if time allows.
- Appropriate athletic clothing must be worn. (See the ESC guidelines for details.)
- Contestants must compete with shoes on both feet.
- It is the responsibility of the contestants to be present when their event is run. Students will be disqualified if events are missed.

CHESS/DRAUGHTS

Choose one from of the following events:

- Chess
- Drafts



Guidelines

- Students will compete in the 10 - 12 age group.
- Refer to the ESC Senior Guidelines for details on rules.
- Students should bring their own board and pieces to ESC.
- It is the responsibility of the contestants to be present when their event is run. Students will be disqualified if events are missed.

JOIN A TEAM EVENT

Students may choose to join one senior team event with their school or home school group.

You can choose one of the following events:

- Vocal ensemble
- Male Football
- Female Netball



TAKE NOTE

Dress Code

The dress code for the junior convention is the same as for the senior ESC. Please refer to the ESC Guidelines for details.

Early Entries

Academic and 2D Art events are early entries. This means they are submitted to the ESC office ahead of the convention to allow for judging. All entries must reach the office no later than 24 April.

Contact the Office

Should you have any queries or need any assistance, don't hesitate to contact the ESC Office:

Tel: 01793 783 783

Email: events@christian.education

*I can do all things through
Christ who strengthens me.
(Philippians 4:13)*